

35 Ton Fixed Height Tripod Jack

Model 7235A

The Model 7235A Fixed Height Tripod Jack is a 35 ton capacity, two stage hydraulic jack designed primarily for use in aircraft maintenance. It consists of a tripod structure, hydraulic cylinder/reservoir assembly, adjustable hand pump and swivel casters.

The jack leg pads are raised off the ground by spring loaded casters. The casters will retract and the pads rest on the ground when a load is applied to the jack.

Model 7235A is built to withstand harsh environmental conditions and rugged use, and to provide many years of continuous service. Our customers are guaranteed a quality product with each purchase and are assured of our continued product support whenever and wherever the need arises.

Standard Features:

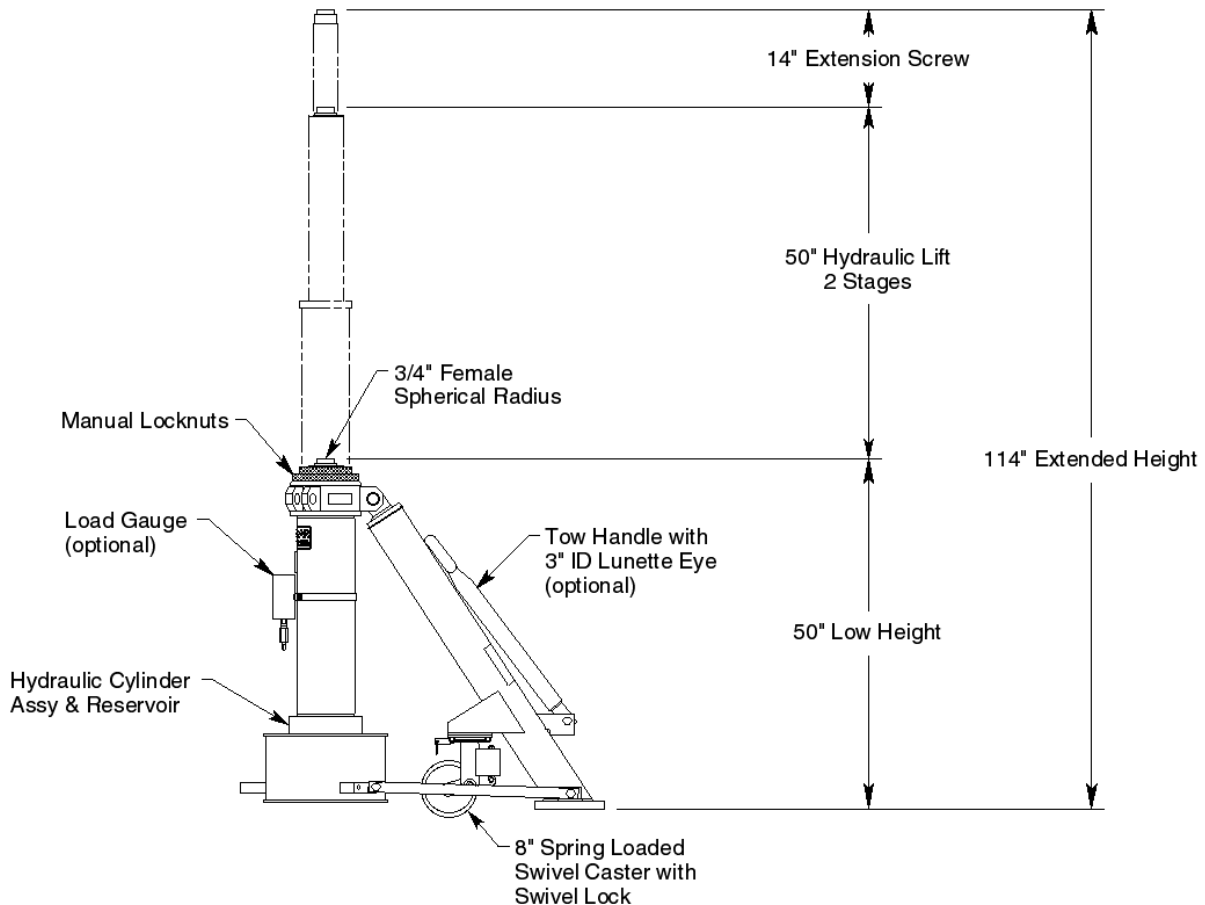
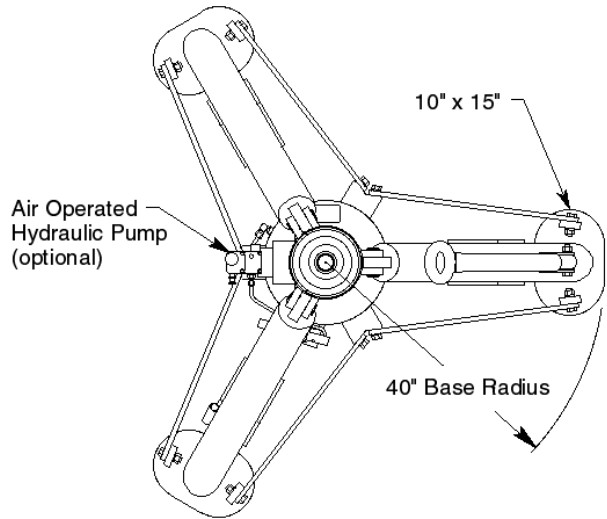
- Manual hand pump with high, medium and low pressure operating positions
- Heavy duty swivel casters
- Rain hat (covers jack upper head)
- Hard chrome plated cylinder bore
- All unpainted parts are plated to resist corrosion
- Skydrol resistant paint (safety yellow)
- Factory proof load @ 150% of rated capacity
- Three year standard warranty
- Shipment on domestic skid

Optional Features:

- Air operated hydraulic pump
- Load gauge for load indication (reads tons/psig)
- Tow handle for ease of towing
- Export crating
- Customer specified paint color

35 Ton Fixed Height Tripod Jack

Model 7235A



For more information contact: sales@malabar.com

35 Ton Fixed Height Tripod Jack

Model 7235A

Specifications:

Rated Capacity.....	35 tons (31.8 m. tons)
Side Load.....	15% of vertical load
Roll Under Height.....	51.5 inches (1308 mm)
Low Height.....	50 inches (1270 mm)
Hydraulic Lift.....	50 inches (1270 mm)
Extension Screw.....	14 inches (356 mm)
Total Extended Height.....	114 inches (2896 mm)
Oil Pressure at Rated Capacity.....	3060 psig (215 kg/sq cm)
Safety Pop-off Valve set at.....	38.5 tons (34.9 m. tons)
Proof Load.....	52.5 tons (47.6 m. tons)
Reservoir Capacity.....	8 gallons (30.3 liters)
Hydraulic Fluid.....	MIL-PRF-5606 or equivalent
Maximum Towing Speed.....	5 mph (8 km/h)
Approximate Jack Net Weight.....	1500 lbs (680 kg)

Model 7235A Typical Aircraft Applications:

Forward Fuselage	Wing	Aft Fuselage
B727, B737, DC8	B717, B737, DC9, F28, F100, MD80, MD90	B717, B727, DC9, MD80, MD90

Optional Equipment Codes:

(Specify with order)

- AP: Air Operated Hydraulic Pump
- GA: Load Gauge
- TH: Tow Handle
- SPC: Special Paint Color (yellow is standard)
- 7235APK: Repair Kit

Packaging Codes & Options:

(Specify with order)

- : Domestic Skid – Jack Set-Up
- KD: Domestic Skid – Jack Knocked Down (Additional Cost)
- EC: Export Crate – Jack Set-up (Additional Cost)
- ECKD: Export Crate – Jack Knocked Down (Additional Cost)

35 Ton Fixed Height Tripod Jack

Model 7235A

Shipping Data:

NOTE: Unless otherwise specified, Model 7235A jack is shipped on a wood skid in the set-up condition. Refer to Malabar Tripod Jack Shipping Supplement for additional packaging information.

Packaging Code	Length inches (mm)	Width inches (mm)	Height inches (mm)	Weight lbs (kg)
-	77 (1956)	66 (1676)	58 (1473)	1750 (794)
KD	78 (1981)	40 (1016)	44 (1118)	1750 (794)
EC	79 (2007)	71 (1803)	61 (1549)	2000 (907)
ECKD	80 (2032)	45 (1143)	47 (1194)	1900 (862)