

40 Ton Fixed Height Tripod Jack

Model 733A



The Model 733A Fixed Height Tripod Jack is a 40 ton capacity, single stage hydraulic jack designed primarily for use in aircraft maintenance. It consists of a tripod structure, hydraulic cylinder assembly, reservoir, valve block assembly, hand pump assembly, tow handle and swivel casters.

The jack leg pads are raised off the ground by spring loaded casters. The casters will retract and the pads rest on the ground when a load is applied to the jack.

Model 733A is built to withstand harsh environmental conditions and rugged use, and to provide many years of continuous service. Our customers are guaranteed a quality product with each purchase and are assured of our continued product support whenever and wherever the need arises.

Standard Features:

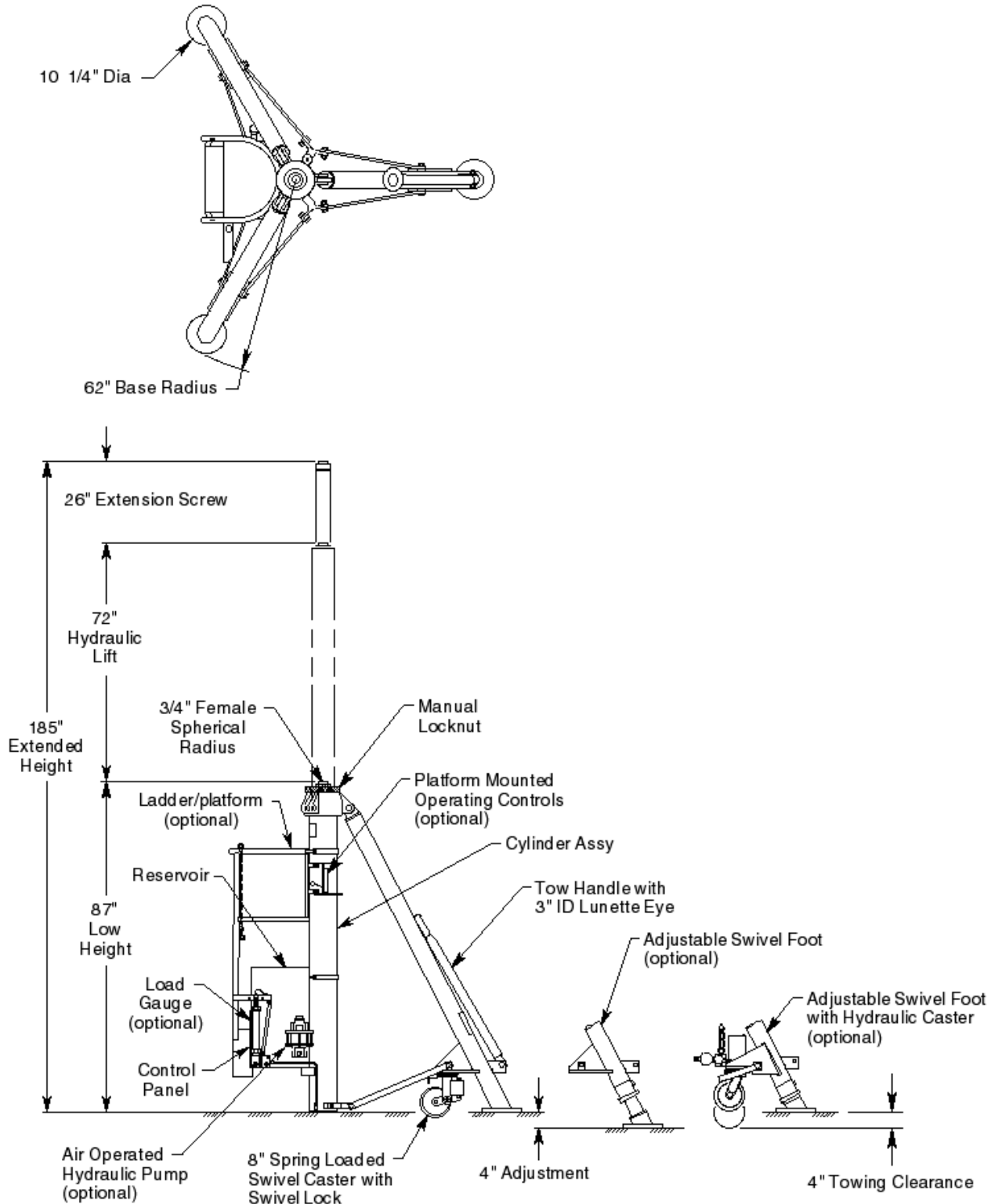
- Manual hand pump with high, medium and low pressure operating positions
- Heavy duty tow handle and swivel casters with swivel locks for improved towing
- Hydraulic "thermal" relief valve for added protection and safety in the event of internal fluid expansion due to temperature
- Secondary cylinder seal for protection against contaminants and to prolong life of primary seal
- Rain hat (covers jack upper head)
- Hard chrome plated cylinder bore
- All unpainted parts are plated to resist corrosion
- Skydrol resistant paint (safety yellow)
- Factory proof load @ 150% of rated capacity
- 3 year warranty
- Shipping on domestic skid

Optional Features:

- Air operated hydraulic pump
- Load gauge for load indication (reads tons/psig)
- Adjustable swivel feet with level for leveling jack
- Hydraulic operated casters provide ease in jack leveling and increased ground clearance for towing
- Platform mounted operating controls allow one person to position locknut while controlling lifting and lowering operations
- Ladder/platform
- 1-1/4 spherical radius male ship adapter
- Extended 3/4 spherical radius female ship adapter
- Customer specified paint color
- Export Crate

40 Ton Fixed Height Tripod Jack

Model 733A



For more information contact: sales@malabar.com

40 Ton Fixed Height Tripod Jack

Model 733A

Specifications:

Rated Capacity	40 tons (36.3 m. tons)
Side Load	15% of vertical load
Roll Under Height	88.5 inches (2248 mm)
Low Height	87 inches (2210 mm)
Hydraulic Lift	72 inches (1829 mm)
Extension Screw	26 inches (660 mm)
Total Extended Height	185 inches (4699 mm)
Oil Pressure at Rated Capacity	2613 psig (184 kg/sq cm)
Safety Pop-off Valves	
System Relief Valve set at	44 tons (39.9 m. tons)
Thermal Relief Valve set at	50 tons (45.4 m. tons)
Proof Load	60 tons (54.4 m. tons)
Reservoir Capacity	14 gallons (53.0 liters)
Hydraulic Fluid	MIL-PRF-5606 or equivalent
Maximum Towing Speed	5 mph (8 km/h)
Approximate Jack Net Weight	1700 lbs (771 kg)

Model 733A Typical Aircraft Applications:

Forward Fuselage	Wing
A300***, A310***, A330***, A340***, A350***, B747, B757, B767, B777**/***, B787, DC10, MD11, L1011	A318*, A319*, A320*, A321*, ATR42, ATR72, C130, C SERIES
*Specify 1-1/4" Male Spherical Radius Ship Adapter (P/N 873120) **Specify Extended 3/4" Female Spherical Radius Ship Adapter (P/N 73318-2) ***Suitable for Shoring and Gear Swing only	

Optional Equipment Codes:

(Specify with order)

- AP: Air Operated Hydraulic Pump
- GA: Load Gauge
- AF: Adjustable Swivel Foot
- HC: Adjustable Swivel Foot with Hydraulic Caster
- SA: Shock Absorber (requires hydraulic caster)
- LA: Ladder/platform
- RC: Platform Mounted Operating Controls
- SA2: 1-1/4" Male Spherical Radius Ship Adapter
- SA3: Extended 3/4" Female Spherical Radius Ship Adapter
- SPC: Special Paint Color (yellow is standard)
- 733APK: Repair Kit

40 Ton Fixed Height Tripod Jack

Model 733A

Packing Codes & Options:

(Specify with order)

- : Domestic Skid - Jack Set-up
- KD: Domestic Skid - Jack Knocked Down (Additional Cost)
- ECKD: Export Crate - Jack Knocked Down (Additional Cost)

Shipping Data:

NOTE: Unless otherwise specified, Model 733A jack is shipped on a wood skid in the set-up condition.
Refer to Malabar Tripod Jack Shipping Supplement for additional packaging information.

Packaging Code	Length inches (mm)	Width inches (mm)	Height inches (mm)	Weight lbs (kg)
—	115 (2921)	98 (2489)	94 (2388)	1900 (862)
KD	120 (3048)	40 (1016)	56 (1422)	1900 (862)
ECKD	122 (3099)	45 (1143)	59 (1499)	2300 (1043)