

# 7 Ton Fixed Height Tripod Jack

## Model 8722A



The Model 8722A Fixed Height Tripod Jack is a 7 ton capacity, single stage hydraulic jack designed primarily for use in aircraft maintenance. It consists of a tripod structure, hydraulic cylinder/reservoir assembly, hand pump and swivel casters.

The jack leg pads are raised off the ground by spring loaded casters. The casters will retract and the pads rest on the ground when a load is applied to the jack.

Model 8722A is built to withstand harsh environmental conditions, rugged use and to provide many years of continuous service. Our customers are guaranteed a quality product with each purchase and are assured of our continued product support whenever and wherever the need arises.

### **Standard Features:**

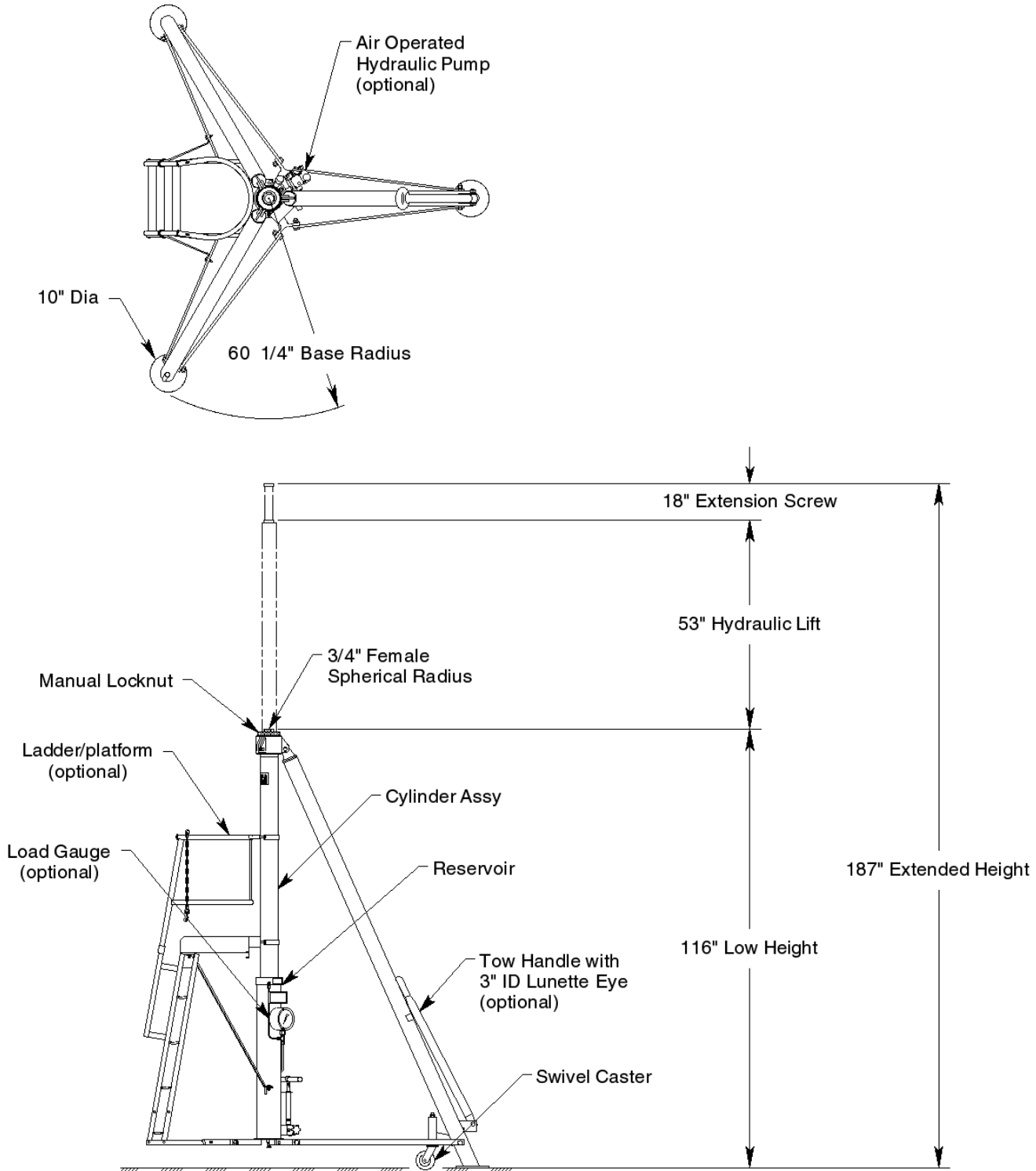
- Manual hand pump with high, medium and low pressure operating positions
- Heavy duty swivel casters
- Rain hat (covers jack upper head)
- Hard chrome plated cylinder bore
- All unpainted parts are plated to resist corrosion
- Skydrol resistant paint (safety yellow)
- Factory proof load @ 150% of rated capacity
- Three year standard warranty
- Shipment on domestic skid

### **Optional Features:**

- Air operated hydraulic pump
- Load gauge for load indication (reads tons/psig)
- Tow handle for ease of towing
- Ladder/platform
- Export crating
- Customer specified paint color

# 7 Ton Fixed Height Tripod Jack

## Model 8722A



For more information contact: [sales@malabar.com](mailto:sales@malabar.com)

# 7 Ton Fixed Height Tripod Jack

## Model 8722A

### Specifications:

Rated Capacity .....	7 tons (6.4 m. tons)
Side Load.....	15% of vertical load
Roll Under Height .....	117 inches (2972 mm)
Low Height.....	116 inches (2946 mm)
Hydraulic Lift.....	53 inches (1346 mm)
Extension Screw.....	18 inches (457 mm)
Total Extended Height.....	187 inches (4750 mm)
Oil Pressure at Rated Capacity.....	980 psig (68.9 kg/sq cm)
Safety Pop-off Valve set at.....	7.7 tons (7.0 m. tons)
Proof Load .....	10.5 tons (9.5 m. tons)
Reservoir Capacity .....	4 gallons (15.1 liters)
Hydraulic Fluid.....	MIL-PRF-5606 or equivalent
Maximum Towing Speed.....	5 mph (8 km/h)
Approximate Jack Net Weight.....	1300 lbs (590 kg)

### **Model 8722A Typical Aircraft Applications:**

#### **Aft Fuselage**

A319, A320, A321, B757\*

\*Specify with external relief valve for this application

### Optional Equipment Codes:

(Specify with order)

AP: Air Operated Hydraulic Pump

GA: Load Gauge

TH: Tow Handle

LA: Ladder/Platform

SPC: Special Paint Color (yellow is standard)

8722APK: Repair Kit

### Packaging Codes & Options:

(Specify with order)

KD: Domestic Skid – Jack Knocked Down

LKD: Domestic Skid – Jack & Ladder/Platform Kit Knocked Down

ECKD: Export Crate – Jack Knocked Down (Additional Cost)

ECLKD: Export Crate – Jack & Ladder/Platform Kit Knocked Down (Additional Cost)

# 7 Ton Fixed Height Tripod Jack

## Model 8722A

### Shipping Data:

NOTE: Unless otherwise specified, Model 8722A jack is shipped on a wood skid in the knocked down condition. Refer to Malabar Tripod Jack Shipping Supplement for additional packaging information.

<b>Packaging Code</b>	<b>Length</b> inches (mm)	<b>Width</b> inches (mm)	<b>Height</b> inches (mm)	<b>Weight</b> lbs (kg)
KD	130 (3302)	40 (1016)	42 (1067)	1500 (680)
LKD	130 (3302)	40 (1016)	57 (1448)	1725 (782)
ECKD	132 (3353)	45 (1143)	45 (1143)	1800 (816)
ECLKD	132 (3353)	45 (1143)	60 (1524)	2025 (919)