

25 Ton Fixed Height Tripod Jack

Model 8802

The Model 8802 Fixed Height Tripod Jack is a 25 ton capacity, single stage hydraulic jack designed primarily for use in aircraft maintenance. It consists of a tripod structure, hydraulic cylinder assembly, reservoir, valve block assembly, hand pump assembly, tow handle and swivel casters.

The jack leg pads are raised off the ground by spring loaded casters. The casters will retract and the pads rest on the ground when a load is applied to the jack.

Model 8802 is built to withstand harsh environmental conditions and rugged use, and to provide many years of continuous service. Our customers are guaranteed a quality product with each purchase and are assured of our continued product support whenever and wherever the need arises.

Standard Features:

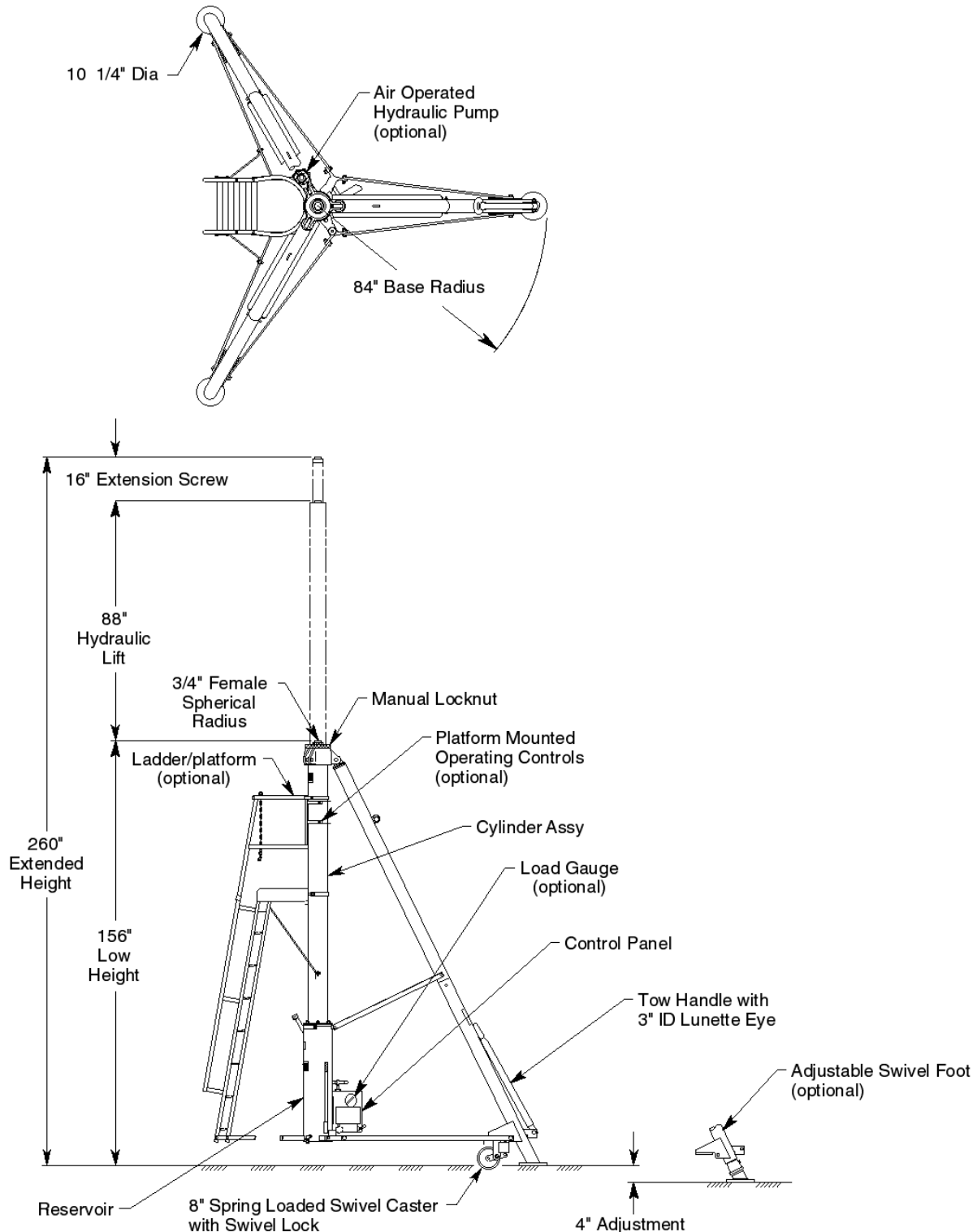
- Manual hand pump with high, medium and low pressure operating positions
- Heavy duty tow handle and swivel casters with swivel locks for improved towing
- Hydraulic "Thermal" relief valve for added protection and safety in the event of internal fluid expansion due to temperature
- Secondary cylinder seal for protection against contaminants and to prolong life of primary seal
- Rain hat (covers jack upper head)
- Hard chrome plated cylinder bore
- All unpainted parts are plated to resist corrosion
- Skydrol resistant paint (safety yellow)
- Factory proof load @ 150% of rated capacity
- Three year standard warranty
- Shipment on domestic skid

Optional Features:

- Air operated hydraulic pump
- Load gauge for load indication (reads tons/psig)
- Adjustable swivel feet with level for leveling jack
- Ladder/Platform
- Platform mounted operating controls allow one person to position locknut while controlling lifting and lowering operations
- Export crating
- Customer specified paint color

25 Ton Fixed Height Tripod Jack

Model 8802



For more information contact: sales@malabar.com

25 Ton Fixed Height Tripod Jack

Model 8802

Specifications:

| | |
|--------------------------------------|----------------------------|
| Rated Capacity..... | 25 tons (22.7 m. tons) |
| Side Load | 15% of vertical load |
| Roll Under Height..... | 157.5 inches (4001 mm) |
| Low Height | 156 inches (3962 mm) |
| Hydraulic Lift | 88 inches (2235 mm) |
| Extension Screw | 16 inches (406 mm) |
| Total Extended Height | 260 inches (6604 mm) |
| Oil Pressure at Rated Capacity | 1640 psig (115 kg/sq cm) |
| Safety Pop-off Valves: | |
| System Relief Valve set at | 27.5 tons (24.9 m. tons) |
| Thermal Relief Valve set at..... | 31.3 tons (28.4 m. tons) |
| Proof Load..... | 37.5 tons (34.0 m. tons) |
| Reservoir Capacity..... | 14.1 gallons (53.4 liters) |
| Hydraulic Fluid | MIL-PRF-5606 or equivalent |
| Maximum Towing Speed | 5 mph (8 km/h) |
| Approximate Jack Net Weight | 2500 lbs (1134 kg) |

Model 8802 Typical Aircraft Applications:

Mid Wing

B747, B767, B777

Optional Equipment Codes:

(Specify with order)

- AP: Air Operated Hydraulic Pump
- GA: Load Gauge
- AF: Adjustable Swivel Foot
- LA: Ladder/Platform
- RC: Platform Mounted Operating Controls
- SPC: Special Paint Color (yellow is standard)
- 8802PK: Repair Kit

Packaging Codes & Options:

(Specify with order)

- KD: Domestic Skid – Jack Knocked Down
- ECKD: Export Crate – Jack Knocked Down (Additional Cost)

25 Ton Fixed Height Tripod Jack

Model 8802

Shipping Data:

NOTE: Unless otherwise specified, Model 8802 jack is shipped on a wood skid in the knocked down condition. Refer to Malabar Tripod Jack Shipping Supplement for additional packaging information.

| Packaging Code | Length inches (mm) | Width inches (mm) | Height inches (mm) | Weight lbs (kg) |
|-----------------------|------------------------------|-----------------------------|------------------------------|---------------------------|
| KD | 173 (4394) | 40 (1016) | 44 (1118) | 2800 (1270) |
| ECKD | 175 (4445) | 45 (1143) | 47 (1194) | 3200 (1451) |