

15 Ton Fixed Height Tripod Jack

Model 8803A

The Model 8803A Fixed Height Tripod Jack is a 15 ton capacity, single stage hydraulic jack designed primarily for use in aircraft maintenance. It consists of a tripod structure, hydraulic cylinder assembly, reservoir, valve block assembly, hand pump assembly, tow handle and swivel casters.

The jack leg pads are raised off the ground by spring loaded casters. The casters will retract and the pads rest on the ground when a load is applied to the jack.

Model 8803A is built to withstand harsh environmental conditions, rugged use and to provide many years of continuous service. Our customers are guaranteed a quality product with each purchase and are assured of our continued product support whenever and wherever the need arises.

Standard Features:

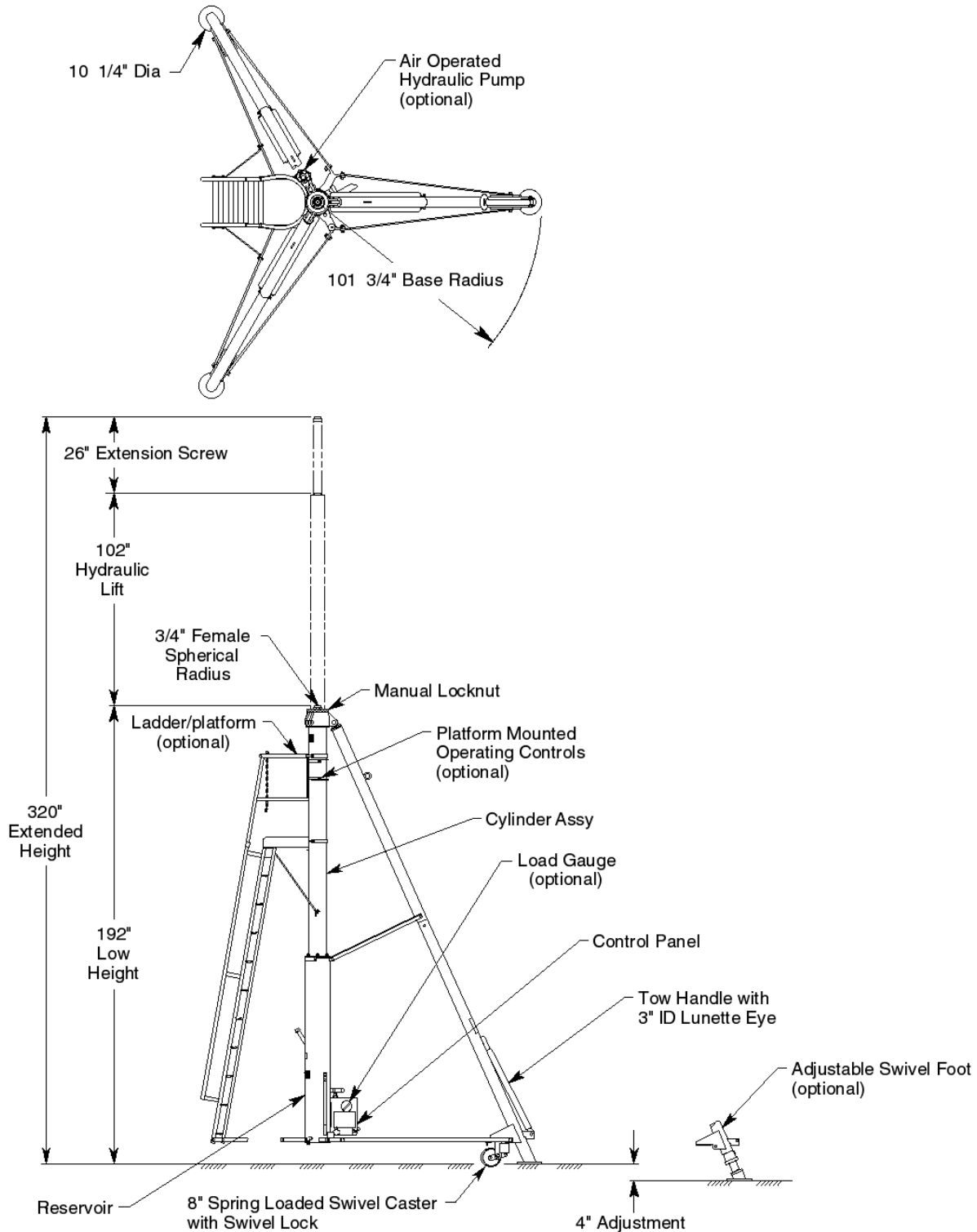
- Manual hand pump with high, medium and low pressure operating positions
- Heavy duty tow handle and swivel casters with swivel locks for improved towing
- Hydraulic "Thermal" relief valve for added protection and safety in the event of internal fluid expansion due to temperature
- Secondary cylinder seal for protection against contaminants and to prolong life of primary seal
- Rain hat (covers jack upper head)
- Hard chrome plated cylinder bore
- All unpainted parts are plated to resist corrosion
- Skydrol resistant paint (safety yellow)
- Factory proof load @ 150% of rated capacity
- Three year standard warranty
- Shipment on domestic skid

Optional Features:

- Air operated hydraulic pump
- Load gauge for load indication (reads tons/psig)
- Adjustable swivel feet with level for leveling jack
- Ladder/Platform
- Platform mounted operating controls allow one person to position locknut while controlling lifting and lowering operations
- Export crating
- Customer specified paint color

15 Ton Fixed Height Tripod Jack

Model 8803A



For more information contact: sales@malabar.com

15 Ton Fixed Height Tripod Jack

Model 8803A

Specifications:

Rated Capacity.....	15 tons (13.6 m. tons)
Side Load	15% of vertical load
Roll Under Height.....	193.5 inches (4915 mm)
Low Height	192 inches (4877 mm)
Hydraulic Lift	102 inches (2591 mm)
Extension Screw	26 inches (660 mm)
Total Extended Height	320 inches (8128 mm)
Oil Pressure at Rated Capacity	984 psig (69 kg/sq cm)
Safety Pop-off Valves:	
System Relief Valve set at.....	16.5 tons (15.0 m. tons)
Thermal Relief Valve set at.....	18.8 tons (17.1 m. tons)
Proof Load.....	22.5 tons (20.4 m. tons)
Reservoir Capacity.....	14.4 gallons (54.5 liters)
Hydraulic Fluid	MIL-PRF-5606 or equivalent
Maximum Towing Speed	5 mph (8 km/h)
Approximate Jack Net Weight	2900 lbs (1315 kg)

Model 8803A Typical Aircraft Applications:

Mid Wing	Wing Tip	Aft Fuselage
B777, B787	B747, B777, B787	A330

Optional Equipment Codes:

(Specify with order)

- AP: Air Operated Hydraulic Pump
- GA: Load Gauge
- AF: Adjustable Swivel Foot
- LA: Ladder/Platform
- RC: Platform Mounted Operating Controls
- SPC: Special Paint Color (yellow is standard)
- 8803APK: Repair Kit

Packaging Codes & Options:

(Specify with order)

- KD: Domestic Skid – Jack Knocked Down
- ECKD: Export Crate – Jack Knocked Down (Additional Cost)

15 Ton Fixed Height Tripod Jack

Model 8803A

Shipping Data:

NOTE: Unless otherwise specified, Model 8803A jack is shipped on a wood skid in the knocked down condition. Refer to Malabar Tripod Jack Shipping Supplement for additional packaging information.

Packaging Code	Length inches (mm)	Width inches (mm)	Height inches (mm)	Weight lbs (kg)
KD	217 (5512)	40 (1016)	44 (1118)	3200 (1452)
ECKD	219 (5563)	45 (1143)	47 (1194)	3600 (1633)