

100 Ton Universal Axle Jack Test Stand

Model 8833-2



The Model 8833-2 Universal Axle Jack Test Stand is designed to test all Malabar axle jacks up to 110% of their rated capacity, thus enabling checking of safety pop-off valve settings. This test stand is also designed to test structural and hydraulic system integrity and verify load gauge accuracy.

Model 8833-2 may be installed in ground with base flush with floor or above ground which requires a 4 inch (102 mm) high ramp.

Model 8833-2 is built to withstand harsh environmental conditions and rugged use, and to provide many years of continuous service. Our customers are guaranteed a quality product with each purchase and are assured of our continued product support whenever and wherever the need arises.

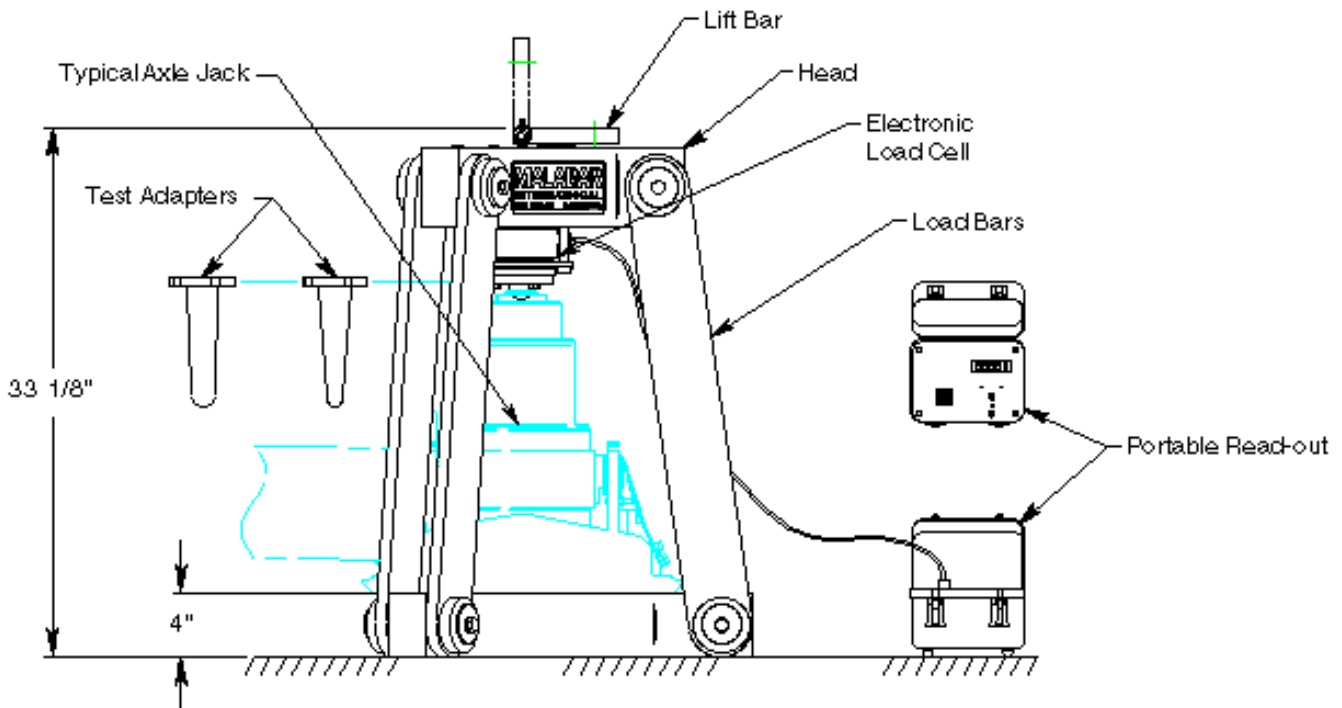
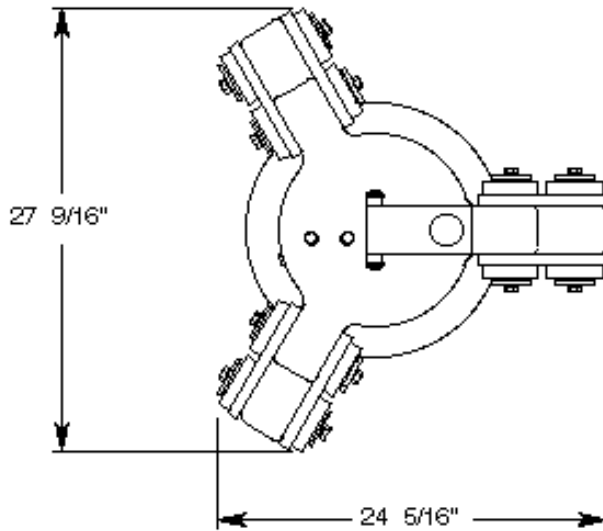
Standard Features:

- Rugged steel base, load bars and head
- Integral lift bar for easy transportability
- 100 ton capacity electronic load cell
- Portable read-out (digital indicator)
- 10 Foot long cable to connect portable read out to load cell
- Battery operated with four standard "D" size batteries
- Easy "zero" and "span" adjustments
- Read-out includes shunt-cal feature to verify calibration
- Multiple 3/4 inch and 1/2 inch (19 and 12.7 mm) spherical radius jack adapters
- 1 year standard warranty
- Skydrol resistant paint (standard safety yellow)

Optional Features:

- Repair kit
- Export crating
- Customer specified paint color

100 Ton Universal Axle Jack Test Stand Model 8833-2



For more information contact: sales@malabar.com

100 Ton Universal Axle Jack Test Stand

Model 8833-2

Specifications:

Rated Capacity	100 tons (90.7 m. tons)
Roll Under Height with Standard Adapter	18.38 inches (467 mm)
Roll Under Height with Extended Adapter.....	11.88 inches (302 mm)
Standard Jack Adapter Spherical Radius	3/4 inch (19 mm)
Extended Jack Adapter Spherical Radius.....	3/4 inch & 1/2 inch (19 & 12.7mm)
Test Stand Length	24.31 inches (618 mm)
Test Stand Width	27.56 inches (700 mm)
Test Stand Height.....	33.12 inches (841 mm)
Approximate Net Weight.....	775 lbs (352 kg)

Model 8833-2 Typical Applications:

Virtually all mobile and hand carry type aircraft axle jacks

Optional Accessory Codes:

(Order Separately)

- 8833EPK: Repair Kit
- SPC: Specified Paint Color

Packaging Codes & Options:

(Specify with order)

- : Domestic Skid
- EC: Export Crate (Additional Cost)

Shipping Data:

NOTE: Unless otherwise specified, Model 8833-2 is shipped on a wood skid.

Packaging Code	Length inches (mm)	Width inches (mm)	Height inches (mm)	Weight lbs (kg)
-	30 (762)	30 (762)	38 (965)	850 (386)
EC	32 (813)	35 (889)	41 (1041)	1000 (454)