

41 Ton Fixed Height Tripod Jack

Model 8850



The Model 8850 Fixed Height Tripod Jack is a 41 ton capacity, single stage hydraulic jack designed primarily for use in aircraft maintenance. It consists of a tripod structure, reservoir, valve block assembly, hand pump assembly, tow handle and swivel casters.

The jack leg pads are raised off the ground by spring loaded casters. The casters will retract and the pads rest on the ground when a load is applied to the jack.

Model 8850 is built to withstand harsh environmental conditions and rugged use, and to provide many years of continuous service. Our customers are guaranteed a quality product with each purchase and are assured of our continued product support whenever and wherever the need arises.

Standard Features:

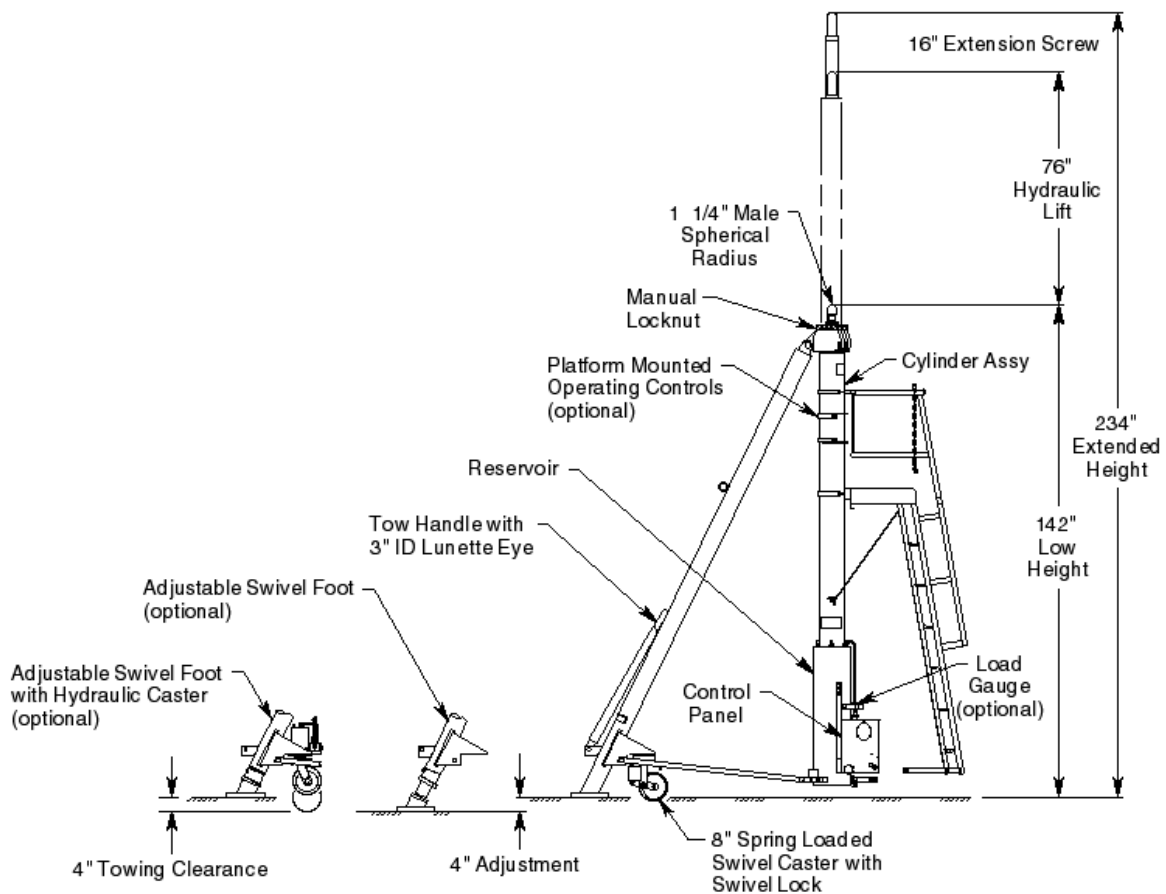
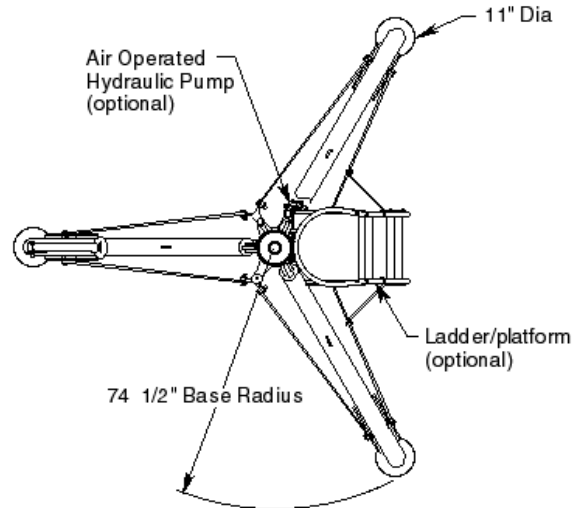
- Manual hand pump with high, medium and low pressure operating positions
- Heavy duty tow handle and swivel casters with swivel locks for improved towing
- Hydraulic “Thermal” relief valve for added protection and safety in the event of internal fluid expansion due to temperature
- Secondary cylinder seal for protection against contaminants and to prolong life of primary seal
- Rain hat (covers jack upper head)
- Hard chrome plated cylinder bore
- All unpainted parts are plated to resist corrosion
- Skydrol resistant paint (safety yellow)
- Factory proof load @ 150% of rated capacity
- Three year standard warranty
- Shipment on domestic skid

Optional Features:

- Air operated hydraulic pump
- Load gauge for load indication (reads tons/psig)
- Adjustable swivel feet with level for leveling jack
- Hydraulic operated casters provide ease in jack leveling and increased ground clearance for towing
- Platform mounted operating controls allow one person to position locknut while controlling lifting and lowering operations
- Ladder/Platform
- Export crating
- Customer specified paint color

41 Ton Fixed Height Tripod Jack

Model 8850



For more information contact: sales@malabar.com

41 Ton Fixed Height Tripod Jack

Model 8850

Specifications:

Rated Capacity.....	41 tons (37.2 m. tons)
Side Load	15% of vertical load
Roll Under Height.....	143.5 inches (3645 mm)
Low Height	142 inches (3607 mm)
Hydraulic Lift	76 inches (1930 mm)
Extension Screw	16 inches (406 mm)
Total Extended Height	234 inches (5944 mm)
Oil Pressure at Rated Capacity	2646 psig (186 kg/sq cm)
Safety Pop-off Valves:	
System Relief Valve set at.....	45 tons (40.9 m. tons)
Thermal Relief Valve set at.....	51 tons (46.5 m. tons)
Proof Load.....	62 tons (55.8 m. tons)
Reservoir Capacity.....	12.6 gallons (42.8 liters)
Hydraulic Fluid	MIL-PRF-5606 or equivalent
Maximum Towing Speed	5 mph (8 km/h)
Approximate Jack Net Weight	2450 lbs (1111 kg)

Model 8850 Typical Aircraft Applications:

Wing	Aft Fuselage
C130*	B767-200 thru -400, B787
*Specify 3/4" Female Spherical Radius Ship Adapter p/n 73318 for this application	

Optional Equipment Codes:

(Specify with order)

- AP: Air Operated Hydraulic Pump
- GA: Load Gauge
- AF: Adjustable Swivel Foot
- HC: Adjustable Swivel Foot with Hydraulic Caster
- LA: Ladder/Platform
- RC: Platform Mounted Operating Controls
- SPC: Special Paint Color (yellow is standard)
- 8850PK: Repair Kit

Jack Accessories:

(Specify with order)

- 73318: 3/4" Female Spherical Radius Ship Adapter

41 Ton Fixed Height Tripod Jack

Model 8850

Packaging Codes & Options:

(Specify with order)

- KD: Domestic Skid – Jack Knocked Down
- ECKD: Export Crate – Jack Knocked Down (Additional Cost)

Shipping Data:

NOTE: Unless otherwise specified, Model 8850 jack is shipped on a wood skid in the knocked down condition. Refer to Malabar Tripod Jack Shipping Supplement for additional packaging information.

Packaging Code	Length inches (mm)	Width inches (mm)	Height inches (mm)	Weight lbs (kg)
KD	149 (3785)	40 (1016)	56 (1422)	2700 (1225)
ECKD	151 (3835)	45 (1143)	59 (1499)	3100 (1406)