

60 Ton Fixed Height Tripod Jack

Model 8918

The Model 8918 Fixed Height Tripod Jack is a 60 ton capacity, two stage hydraulic jack designed primarily for use in aircraft maintenance. It consists of a tripod structure, reservoir, valve block assembly, hand pump assembly, air operated rotary hydraulic pump, adjustable swivel feet with hydraulic casters and shock absorbers, ladders, tow handle and storage box.

On jacks equipped with hydraulic swivel casters, the jack leg pads are raised off the ground. The casters will retract and the pads rest on the ground when a load is applied to the jack.

Model 8918 is built to withstand harsh environmental conditions, rugged use and to provide many years of continuous service. Our customers are guaranteed a quality product with each purchase and are assured of our continued product support whenever and wherever the need arises.

Standard Features:

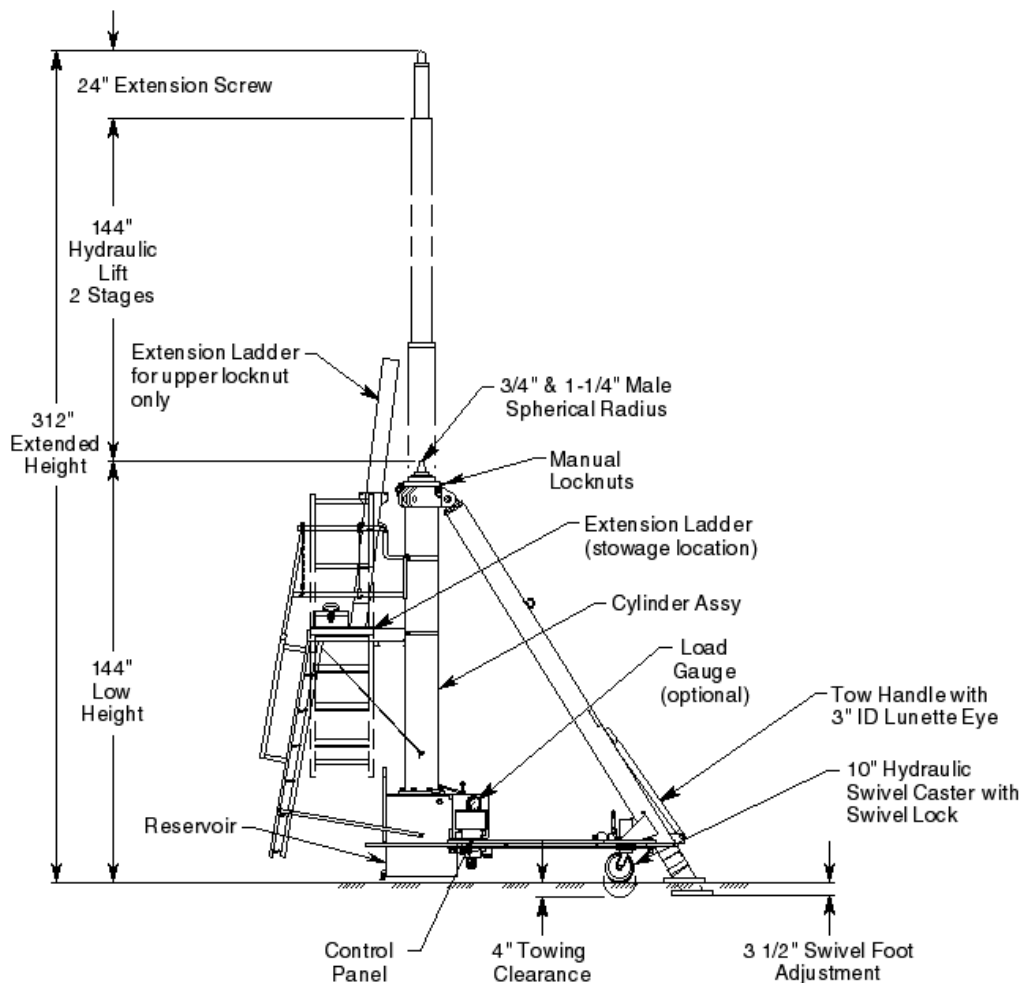
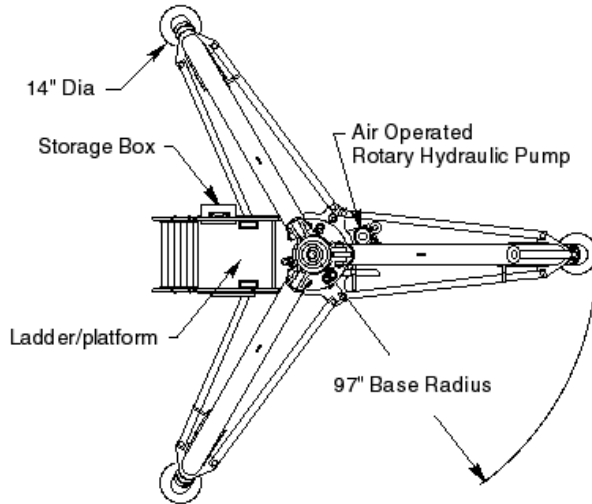
- Manual hand pump with high, medium, and low pressure operating positions
- Heavy duty tow handle and swivel casters with swivel locks for improved towing
- Hydraulic "Thermal" relief valve for added protection and safety in the event of internal fluid expansion due to temperature
- Secondary cylinder seal to protect against contaminants and prolong life of primary seal
- Air operated rotary hydraulic pump
- Hydraulic operated casters provide ease in jack leveling and increased ground clearance for towing
- Adjustable swivel feet with level for leveling jack
- Rain hat (covers jack upper head)
- Ladders/Platform
- Platform mounted storage box
- Hard chrome plated cylinder bore
- All unpainted parts are plated to resist corrosion
- Skydrol resistant paint (safety yellow)
- Factory proof load @ 150% of rated capacity
- Three year standard warranty
- Shipment on domestic skid(s)

Optional Features:

- Load gauge for load indication (reads tons/psig)
- Ship adapter (3/4" female)
- Customer specified paint color
- Export crating

60 Ton Fixed Height Tripod Jack

Model 8918



For more information contact: sales@malabar.com

60 Ton Fixed Height Tripod Jack

Model 8918

Specifications:

Rated Capacity.....	60 tons (54.44 m. tons)
Side Load	15% of vertical load
Roll Under Height.....	145.5 inches (3696 mm)
Low Height	144 inches (3658 mm)
Hydraulic Lift	144 inches (3658 mm)
Extension Screw	24 inches (610 mm)
Total Extended Height	312 inches (7925 mm)
Oil Pressure at Rated Capacity	2718 psig (191 kg/sq cm)
Safety Pop-off Valves:	
System Relief Valve set at.....	66.0 tons (59.9 m. tons)
Thermal Relief Valve set at.....	75.0 tons (68.0 m. tons)
Hydraulic Caster Relief Valves set at	900 psig (63.3 kg/sq cm)
Proof Load.....	90 tons (81.7 m. tons)
Reservoir Capacity.....	40 gallons (151 liters)
Hydraulic Fluid	MIL-PRF-5606 or equivalent
Maximum Towing Speed	5 mph (8 km/h)
Approximate Jack Net Weight	4500 lbs (2041 kg)

Model 8918 Typical Aircraft Applications:

Universal Tail or Aft

A300*, A310*, A330*, A340*, A350-900*, B747, B747-8, B747SP, B767, B777, B787

*Specify 3/4" Female Spherical Radius Ship Adapter p/n 873009 for this Application

Optional Equipment Codes:

(Specify with order)

- GA: Load Gauge
- SA873009: Ship Adapter P/N 873009 (3/4" Female Spherical Radius)
- SPC: Special Paint Color (yellow is standard)
- 8918PK: Repair Kit

60 Ton Fixed Height Tripod Jack

Model 8918

Packaging Codes & Options:

(Specify with order)

- KD: Domestic Skid – Jack Knocked Down
- ECKD: Export Crate – Jack Knocked Down (Additional Cost)

Shipping Data:

NOTE: Unless otherwise specified, Model 8918 jack is shipped on a wood skid in the knocked down condition.
Refer to Malabar Tripod Jack Shipping Supplement for additional packaging information.

Packaging Code	Length inches (mm)	Width inches (mm)	Height inches (mm)	Weight lbs (kg)	Total Weight lbs (kg)
KD (leg skid)	162 (4115)	40 (1016)	36 (914)	2000 (907)	5200 (2359)
	(cylinder skid)	146 (3708)	45 (1143)	84 (2134)	
ECKD (leg crate)	164 (4166)	45 (1143)	39 (991)	2300 (1043)	5900 (2676)
	(cylinder crate)	148 (3759)	50 (1270)	87 (2210)	