

12 Ton Fixed Height Tripod Jack

Model 8923

The Model 8923 Fixed Height Tripod Jack is a 12 ton capacity, two stage hydraulic jack designed primarily for use in aircraft maintenance. It consists of a tripod structure, hydraulic cylinder/reservoir assembly, adjustable hand pump, adjustable swivel foot and swivel casters.

The jack leg pads are raised off the ground by spring loaded casters. The jack leg pads have adjustable leveling feet for slightly uneven or sloping floors. Jack leg pads must be lowered to contact ground and leveled prior to aircraft jacking.

The Model 8923 is built to withstand harsh environmental conditions and rugged use, and to provide many years of continuous service. Our customers are guaranteed a quality product with each purchase and are assured of our continued product support whenever and wherever the need arises.

Standard Features:

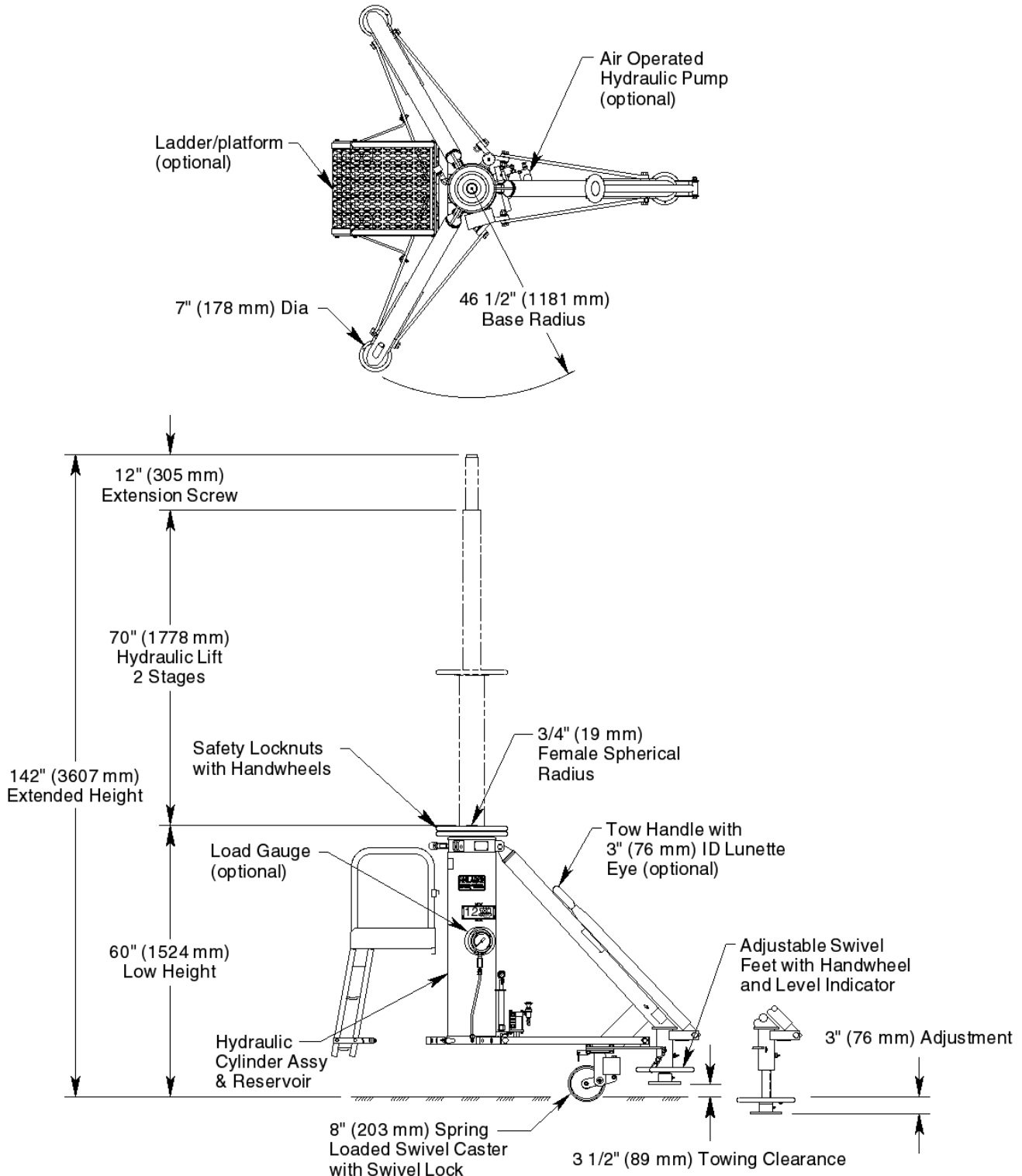
- Rugged tubular steel frame.
- Manual hand pump with high, medium, and low pressure operating positions
- Heavy duty spring loaded swivel casters for smooth jack maneuverability
- Secondary cylinder seal to protect against contaminants and prolong life of primary seal
- Rain hat
- Adjustable swivel feet with handwheels and level indicator
- Hard chrome plated cylinder bore
- All unpainted parts are plated to resist corrosion
- Skydrol resistant paint (yellow)
- Factory proof load @ 150% of rated capacity
- Shipment on domestic skid (jack set-up)
- Three year standard warranty

Optional Features:

- Air operated hydraulic pump
- Load gauge for load indication (reads tons/psig)
- Ladder/Platform
- Tow handle for ease of towing
- Safety locknuts with handwheels
- Air connection for remote air manifold operation
- Customer specified paint color
- Export crating

12 Ton Fixed Height Tripod Jack

Model 8923



For more information contact: sales@malabar.com

12 Ton Fixed Height Tripod Jack

Model 8923

Specifications:

Rated Capacity.....	12 tons (10.9 m. tons)
Side Load.....	15% of vertical load
Low Height.....	60 inches (1524 mm)
Hydraulic Lift.....	70 inches (1778 mm)
Extension Screw.....	12 inches (305 mm)
Total Extended Height.....	142 inches (3607 mm)
Oil Pressure at Rated Capacity.....	914 psig (64.3 kg/sq cm)
Safety Pop-off Valve set at.....	13.2 tons (12.0 m. tons)
Proof Load.....	18 tons (16.3 m. tons)
Reservoir Capacity.....	6.8 gallons (25.7 liters)
Hydraulic Fluid.....	MIL-PRF-5606 or equivalent
Approximate Jack Net Weight.....	710 lbs (322 kg)

Model 8923 Typical Aircraft Applications:

Forward Fuselage	Tail
A318, A319, A320, A321, B737	E1, E2

Optional Equipment Codes:

(Specify with order)

- AM: Air Manifold Remote Inlet
- AP: Air Operated Hydraulic Pump
- GA: Load Gauge
- LA: Ladder/Platform
- SPC: Special Paint Color
- 8923PK: Repair Kit

Packaging Codes & Options:

(Specify with order)

- : Domestic Skid – Jack Set-up
- KD: Domestic Skid – Jack Knocked Down (Additional Cost)
- EC: Export Crate – Jack Set-up (Additional Cost)
- ECKD: Export Crate – Jack Knocked Down (Additional Cost)
- ECLKD: Export Crate – Jack & Ladder/Platform Kit Knocked Down (Additional Cost)

12 Ton Fixed Height Tripod Jack

Model 8923

Shipping Data:

Packaging Code	Length inches (mm)	Width inches (mm)	Height inches (mm)	Weight lbs (kg)
-	83 (2108)	89 (2261)	67 (1702)	900 (408)
KD	72 (1829)	40 (1016)	28 (711)	900 (408)
EC	85 (2159)	94 (2388)	70 (1778)	1100 (499)
ECKD	74 (1880)	45 (1143)	31 (787)	1050 (476)
ECLKD	74 (1880)	45 (1143)	57 (1448)	1220 (553)