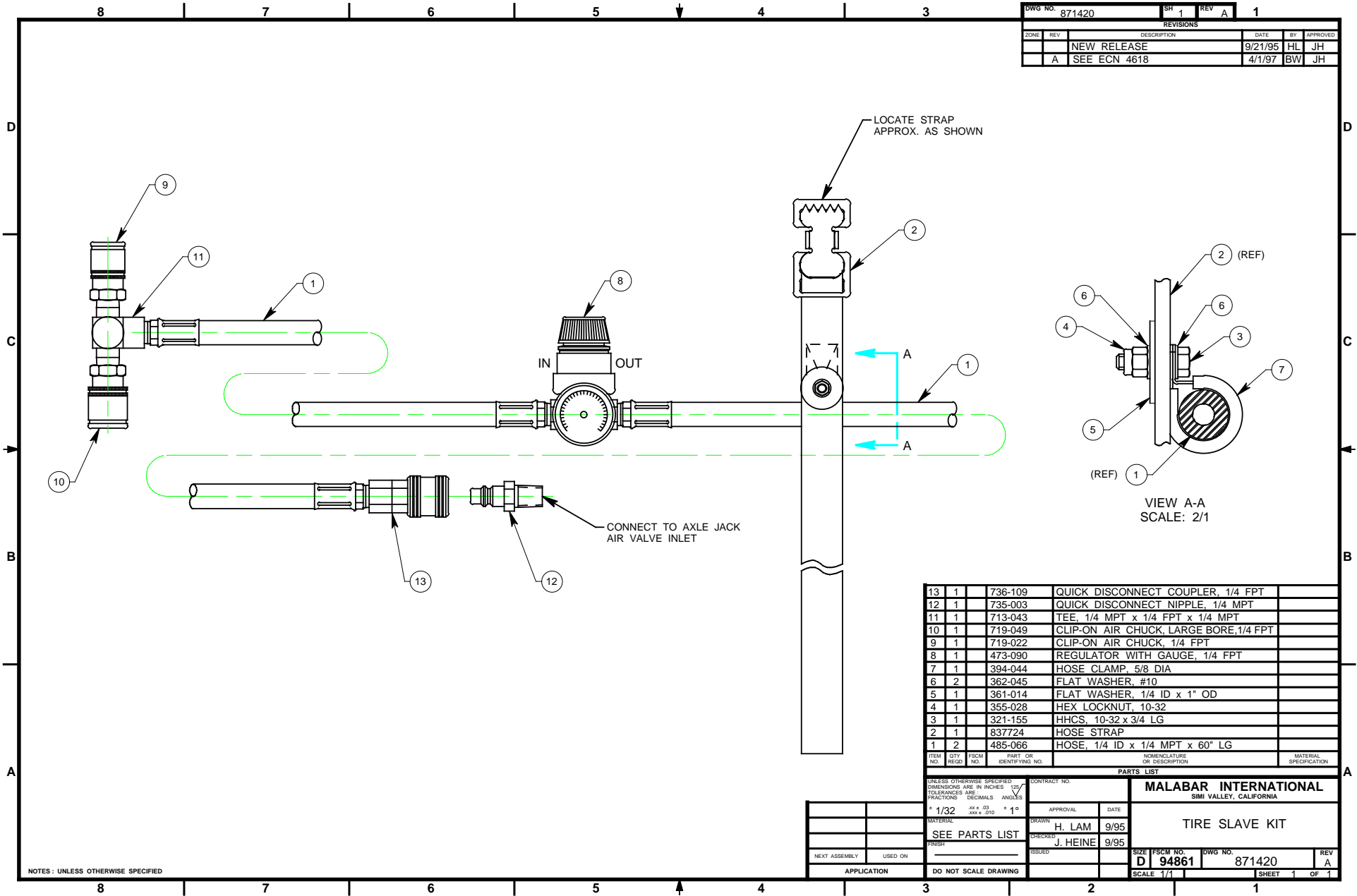


DWG NO. 871420		SH 1	REV A	1
REVISIONS				
ZONE	REV	DESCRIPTION	DATE	BY / APPROVED
		NEW RELEASE	9/21/95	HL / JH
A		SEE ECN 4618	4/1/97	BW / JH



ITEM NO.	QTY	FSCM PRCD NO.	PART OR IDENTIFYING NO.	NOMENCLATURE OR DESCRIPTION	MATERIAL SPECIFICATION
13	1		736-109	QUICK DISCONNECT COUPLER, 1/4 FPT	
12	1		735-003	QUICK DISCONNECT NIPPLE, 1/4 MPT	
11	1		713-043	TEE, 1/4 MPT x 1/4 FPT x 1/4 MPT	
10	1		719-049	CLIP-ON AIR CHUCK, LARGE BORE, 1/4 FPT	
9	1		719-022	CLIP-ON AIR CHUCK, 1/4 FPT	
8	1		473-090	REGULATOR WITH GAUGE, 1/4 FPT	
7	1		394-044	HOSE CLAMP, 5/8 DIA	
6	2		362-045	FLAT WASHER, #10	
5	1		361-014	FLAT WASHER, 1/4 ID x 1" OD	
4	1		355-028	HEX LOCKNUT, 10-32	
3	1		321-155	HHCS, 10-32 x 3/4 LG	
2	1		837724	HOSE STRAP	
1	2		485-066	HOSE, 1/4 ID x 1/4 MPT x 60" LG	

PARTS LIST		CONTRACT NO.		MATERIAL SPECIFICATION	
UNLESS OTHERWISE SPECIFIED DIMENSIONS ARE IN INCHES - FRACTIONS - DECIMALS ANGLES					
TOLERANCES ARE: FRACTIONS - DECIMALS ANGLES					
± 1/32 - .015 - .010 ± 1°					
SEE PARTS LIST		APPROVAL		DATE	
		H. LAM		9/95	
		CHECKED		DATE	
		J. HEINE		9/95	
FINISH		ISSUED		DATE	
NEXT ASSEMBLY		USED ON		APPLICATION	
				DO NOT SCALE DRAWING	
				SCALE 1/1	
				SHEET 1 OF 1	

NOTES: UNLESS OTHERWISE SPECIFIED

**MALABAR INTERNATIONAL**  
SIMI VALLEY, CALIFORNIA

**TIRE SLAVE KIT**

SIZE FSCM NO. DWG NO. REV  
**D 94861 871420 A**