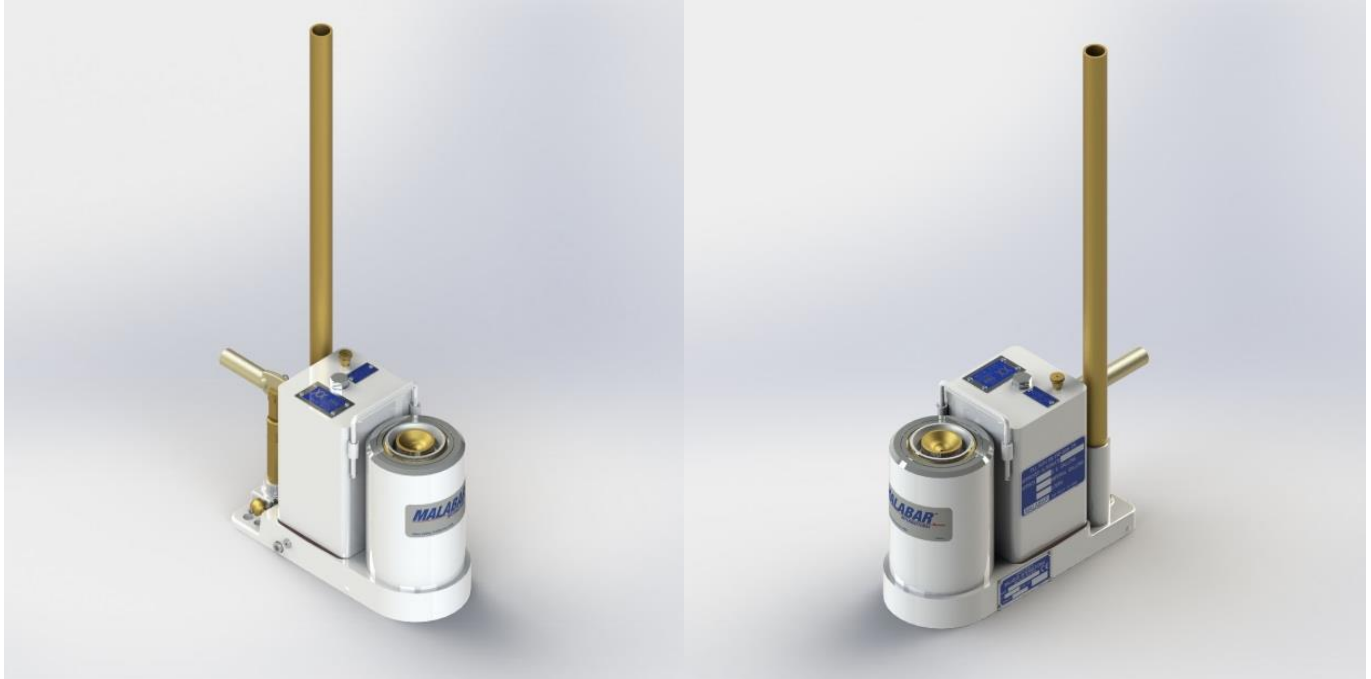


15 Ton Axle Jack

Model 215



The Model 215 Axle Jack is a 15 ton capacity, two stage hydraulic jack designed primarily for use in jacking main and/or nose landing gear of various aircraft. The jack consists of a two stage cylinder assembly, hydraulic reservoir and hand pump assembly. A lifting handle is also supplied for ease of handling.

Model 215 is built to withstand harsh environmental conditions, rugged use and to provide many years of continuous service. Our customers are guaranteed a quality product with each purchase and are assured of our continued product support whenever and wherever the need arises.

Standard Features:

- Hard chrome plated cylinder and plunger bores
- Extension screw and hand pump parts are plated to resist corrosion
- Manual hand pump
- Skydrol resistant paint (safety yellow)
- Factory proof load @ 150% of rated capacity
- 1 year standard warranty
- Fully enclosed shipping container

Optional Features:

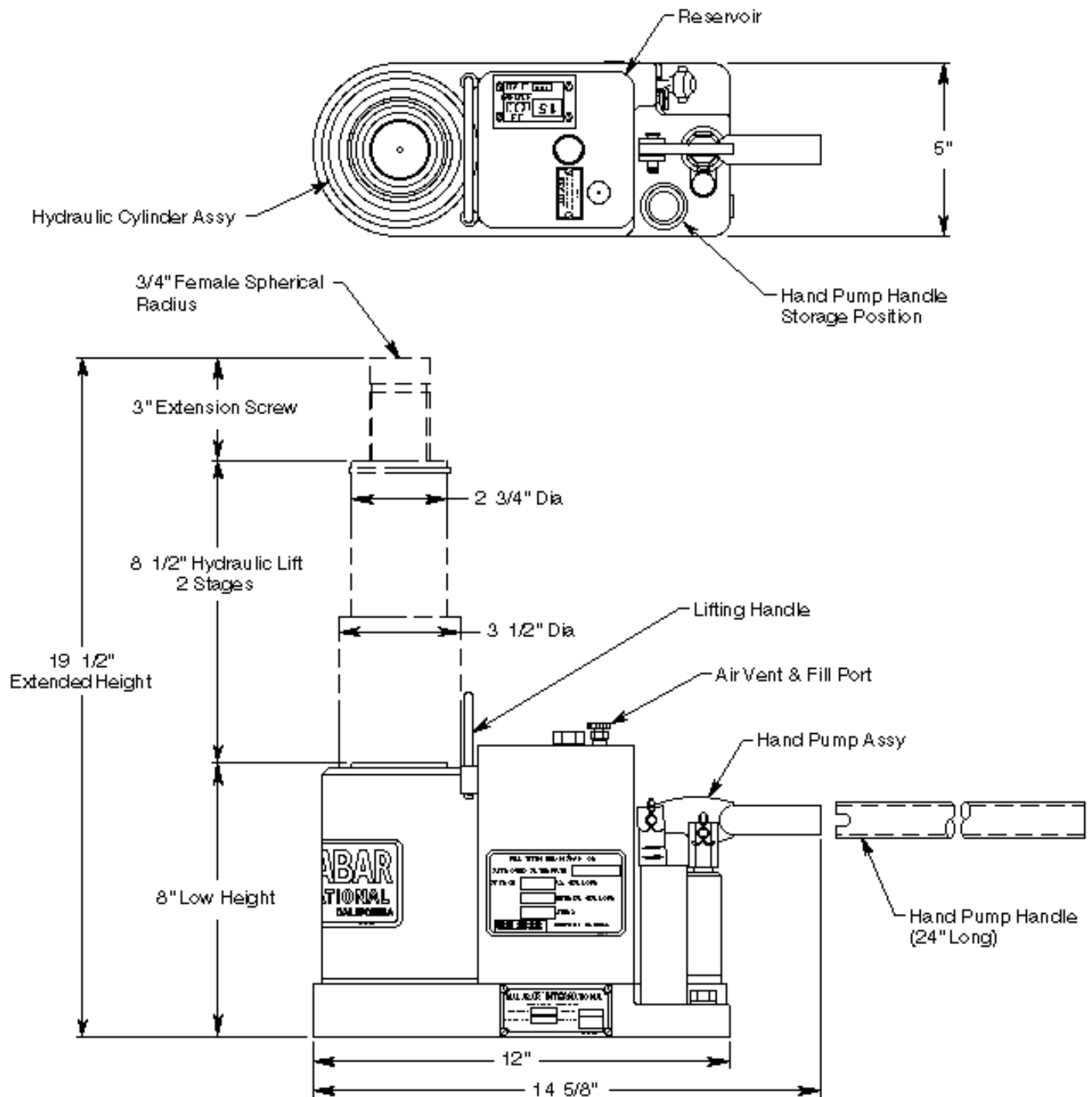
- Customer specified paint color
- Repair kit

(FUNCTIONAL PERFORMANCE EQUIVALENT TO NSN
1730-01-109-1146 AND USN P/N 1128AS100, A20-1HC)

NSN 1730-21-884-7872

15 Ton Axle Jack

Model 215



For more information contact: sales@malabar.com

15 Ton Axle Jack

Model 215

Specifications:

Rated Capacity	15 tons (13.6 m. tons)
Side Load.....	15% of vertical load
Low Height.....	8 inches (203 mm)
Hydraulic Lift.....	8.5 inches (216 mm)
Extension Screw.....	3 inches (76 mm)
Total Extended Height.....	19.5 inches (495 mm)
Oil Pressure at Rated Capacity.....	4320 psig (304 kg/cm ²)
Safety Pop-off Valve set at:.....	16.5 tons (15.0 m. tons)
Proof Load.....	22.5 tons (20.4 m. tons)
Reservoir Capacity	0.5 gallons (1.9 liters)
Hydraulic Fluid.....	MIL-PRF-5606 or equivalent
Approximate Jack Net Weight.....	50 lbs. (23 kg)

Model 215 Typical Aircraft Applications:
Nose Landing Gear
A319, A320, A321, B727, B737-300 thru -900, DC9, MD80, MD90

Optional Equipment Codes:

(Specify with order)

- SPC: Special Paint Color (yellow is standard)
- 215PK: Repair Kit

Shipping Data:			
NOTE: Model 215 jack is shipped in a fully enclosed shipping container.			
Length inches (mm)	Width inches (mm)	Height inches (mm)	Weight lbs (kg)
26 (660)	9 (229)	18 (457)	75 (34)