

# 30 Ton Fixed Height Tripod Jack

## Model 8810B



The Model 8810B Fixed Height Tripod Jack is a 30 ton capacity, single stage hydraulic jack designed primarily for use in aircraft maintenance. It consists of a tripod structure, hydraulic cylinder assembly, reservoir, valve block assembly, hand pump assembly, tow handle and swivel casters.

The jack leg pads are raised off the ground by spring loaded casters. The casters will retract and the pads rest on the ground when a load is applied to the jack.

Model 8810B is built to withstand harsh environmental conditions and rugged use, and to provide many years of continuous service. Our customers are guaranteed a quality product with each purchase and are assured of our continued product support whenever and wherever the need arises.

### Standard Features:

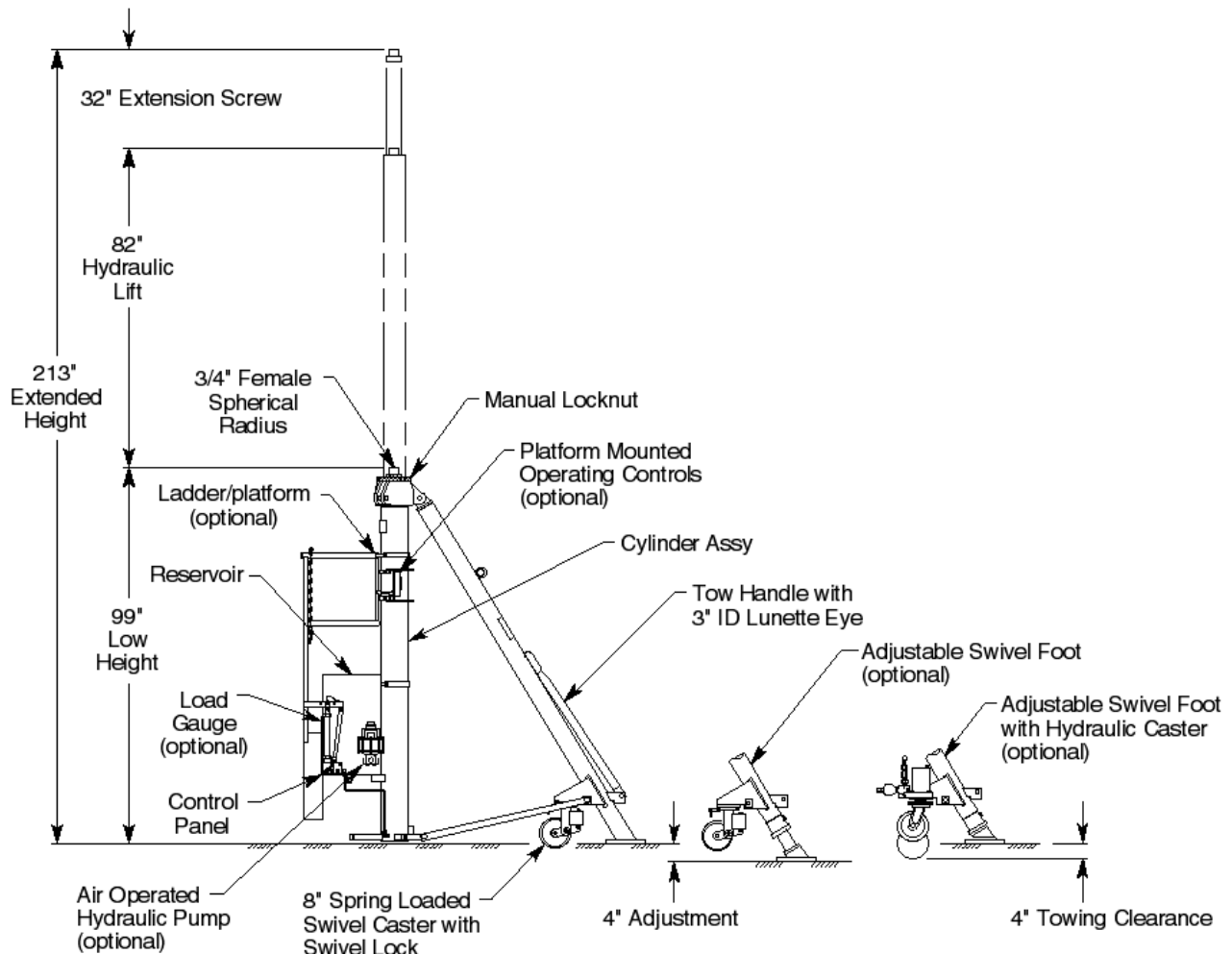
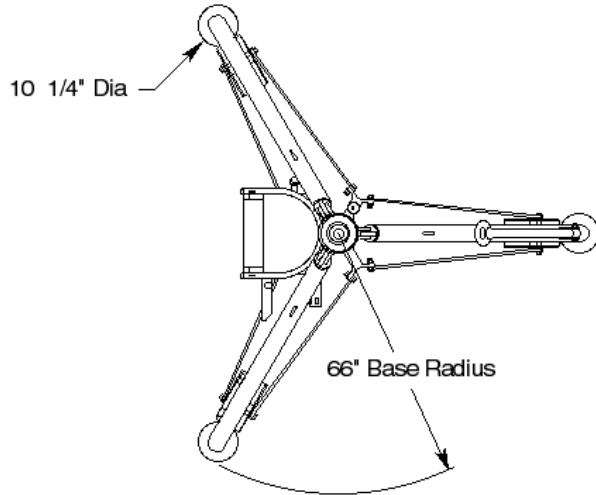
- Manual hand pump with high, medium and low pressure operating positions
- Heavy duty tow handle and swivel casters with swivel locks for improved towing
- Hydraulic “thermal” relief valve for added protection and safety in the event of internal fluid expansion due to temperature
- Secondary cylinder seal for protection against contaminants and to prolong life of primary seal
- Rain hat (covers jack upper head)
- Hard chrome plated cylinder bore
- All unpainted parts are plated to resist corrosion
- Skydrol-resistant paint (safety yellow)
- Factory proof load @ 150% of rated capacity
- 3-year warranty
- Shipping skid

### Optional Features:

- Air operated hydraulic pump
- Load gauge for load indication (reads tons/psig)
- Adjustable swivel feet with level for leveling jack
- Hydraulic operated casters provide ease in jack leveling and increased ground clearance for towing
- Platform mounted operating controls allow one person to position locknut while controlling lifting and lowering operations
- Ladder/platform
- Export crating
- Customer specified paint color

# 30 Ton Fixed Height Tripod Jack

## Model 8810B



For more information contact: [sales@malabar.com](mailto:sales@malabar.com)

# 30 Ton Fixed Height Tripod Jack

## Model 8810B

### Specifications:

Rated Capacity .....	30 tons (27.2 m. tons)
Side Load .....	15% of vertical load
Roll Under Height .....	100.5 inches (2553 mm)
Low Height .....	99 inches (2515 mm)
Hydraulic Lift .....	82 inches (2083 mm)
Extension Screw .....	32 inches (813 mm)
Total Extended Height .....	213 inches (5410 mm)
Oil Pressure at Rated Capacity .....	1944 psig (137 kg/sq cm)
Safety Pop-off Valves	
System Relief Valve set at .....	33.0 tons (29.9 m. tons)
Thermal Relief Valve set at .....	37.5 tons (34.0 m. tons)
Proof Load .....	45.0 tons (40.8 m. tons)
Reservoir Capacity .....	15.6 gallons (59.1 liters)
Hydraulic Fluid .....	MIL-PRF-5606 or equivalent
Maximum Towing Speed .....	5 mph (8 km/h)
Approximate Jack Net Weight .....	2000 lbs (907 kg)

### Model 8810B Typical Aircraft Applications:

Forward Fuselage	Wing	Aft Fuselage
A300*, A310*, A330*, A340*, A350, B747*, B757, B767, B777	A321NEO-LR, Q400	A318, A319, A320, A321, B737
*For roll-under clearance, oleos may have to be extended		

### Optional Equipment Codes:

*(Specify with order)*

- AP: Air Operated Hydraulic Pump
- GA: Load Gauge
- AF: Adjustable Swivel Foot
- HC: Adjustable Swivel Foot with Hydraulic Caster
- SA: Shock Absorber (requires hydraulic caster)
- LA: Ladder/platform
- RC: Platform Mounted Operating Controls
- SPC: Special Paint Color (yellow is standard)
- 8810BPK: Repair Kit

# 30 Ton Fixed Height Tripod Jack

## Model 8810B

### Packaging Codes & Options:

(Specify with order)

- KD: Domestic Skid – Jack Knocked Down
- ECKD: Export Crate – Jack Knocked Down (Additional Cost)

### Shipping Data:

NOTE: Unless otherwise specified, Model 8810B jack is shipped on a wood skid in the knocked down condition. Refer to Malabar Tripod Jack Shipping Supplement for additional packaging information.

Packaging Code	Length inches (mm)	Width inches (mm)	Height inches (mm)	Weight lbs (kg)
KD	113 (2870)	40 (1016)	43 (1092)	2300 (1043)
ECKD	115 (2921)	45 (1143)	46 (1168)	2600 (1179)