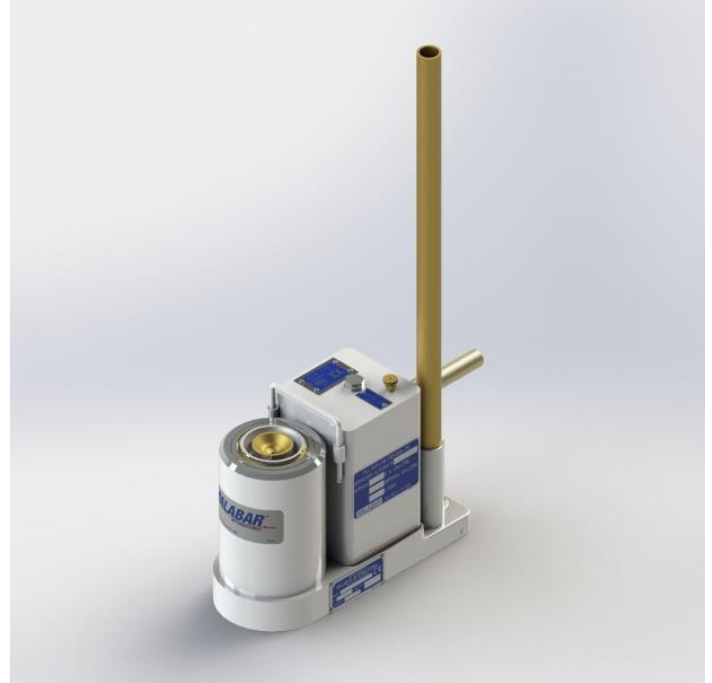


20 Ton Axle Jack

Model 215B



The Model 215B Axle Jack is a 20 ton capacity two stage hydraulic jack designed for use in aircraft maintenance. It consists of a two stage cylinder assembly, hydraulic reservoir, and hand pump. A lifting handle is also supplied for ease of handling.

The Model 215B is built to withstand harsh environmental conditions and rugged use, and to provide many years of continuous service. Our customers are guaranteed a quality product with each purchase and are assured of our continued product support whenever and wherever the need arises.

Standard Features:

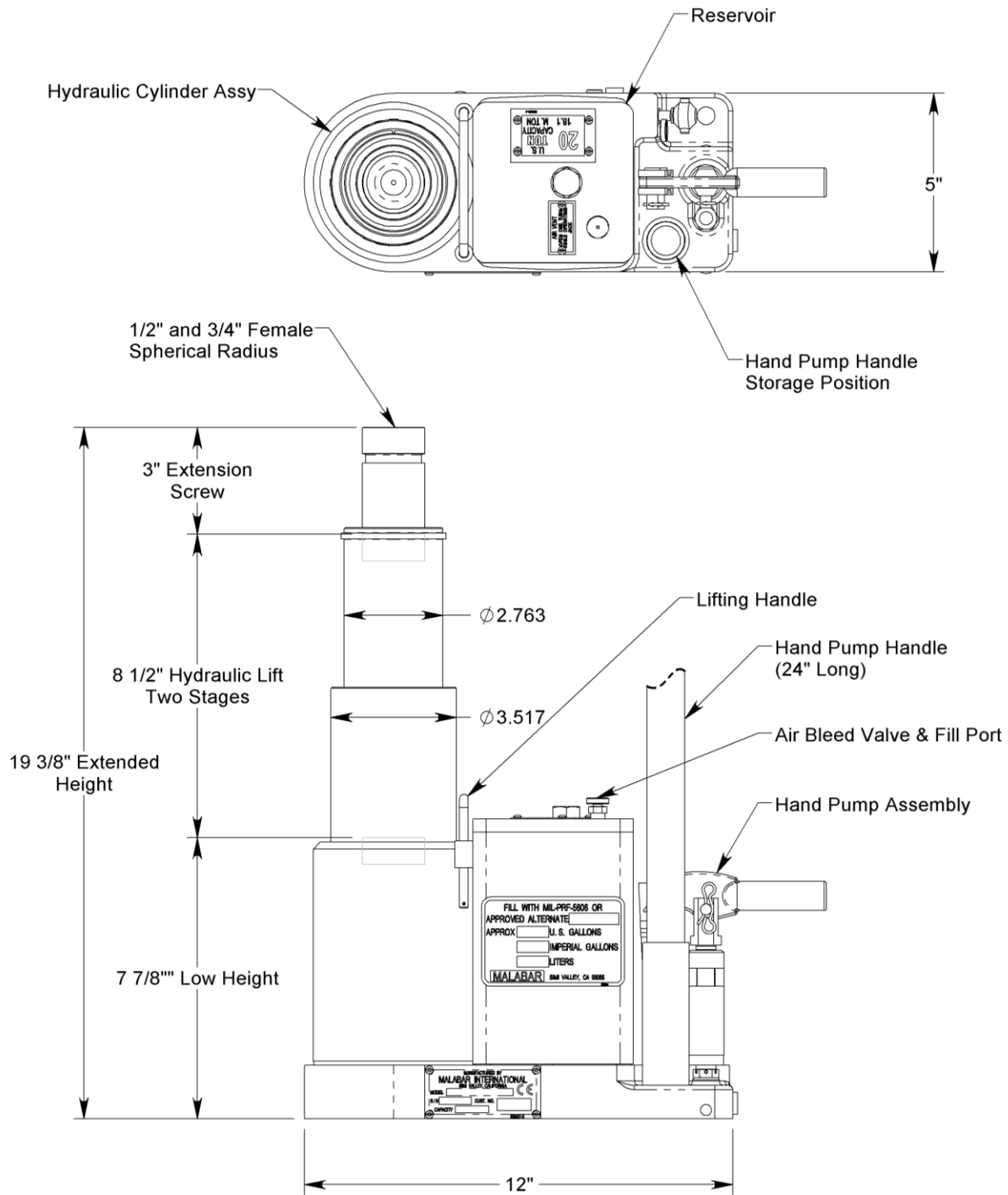
- Manual hand pump
- Secondary cylinder seal for protection against contaminants and to prolong life of primary seal
- Hard chrome plated cylinder bore
- All unpainted parts are plated to resist corrosion
- Skydrol resistant paint (white)
- Factory proof load @ 150% of rated capacity
- Shipment on domestic skid
- 1 year standard warranty

Optional Features:

- Customer-specified paint color

20 Ton Axle Jack

Model 215B



For more information contact: sales@malabar.com

20 Ton Axle Jack

Model 215B

Specifications:

Rated Capacity	20 tons (18.1 m. tons)
Side Load.....	15% of vertical load
Low Height.....	7.9 inches (200 mm)
Hydraulic Lift.....	8.5 inches (216 mm)
Extension Screw.....	3 inches (76 mm)
Total Extended Height.....	19.4 inches (492 mm)
Oil Pressure at Rated Capacity.....	5760 psig (405 kg/cm ²)
Safety Pop-off Valve set at.....	22 tons (20.0 m. tons)
Proof Load	30 tons (27.2 m. tons)
Reservoir Capacity	0.5 Gallons (1.9 liters)
Hydraulic Fluid.....	MIL-PRF-5606 or equivalent
Approximate Jack Net Weight.....	55 lbs (24.9 kg)

Model 215B Typical Aircraft Applications:	
Nose Landing Gear	Main Landing Gear
A319, A320, A321, B727, B737-300 thru -900, DC9, MD80, MD90, F900, F2000, F7X, F8X	F900, F2000, F7X, F8X

Optional Equipment Codes:

(Specify with order)

- SPC: Special paint color
- 215BPK: Repair Kit

Shipping Data:			
Length inches (mm)	Width inches (mm)	Height inches (mm)	Weight lbs (kg)
26 (660)	9 (229)	18 (457)	75 (34)