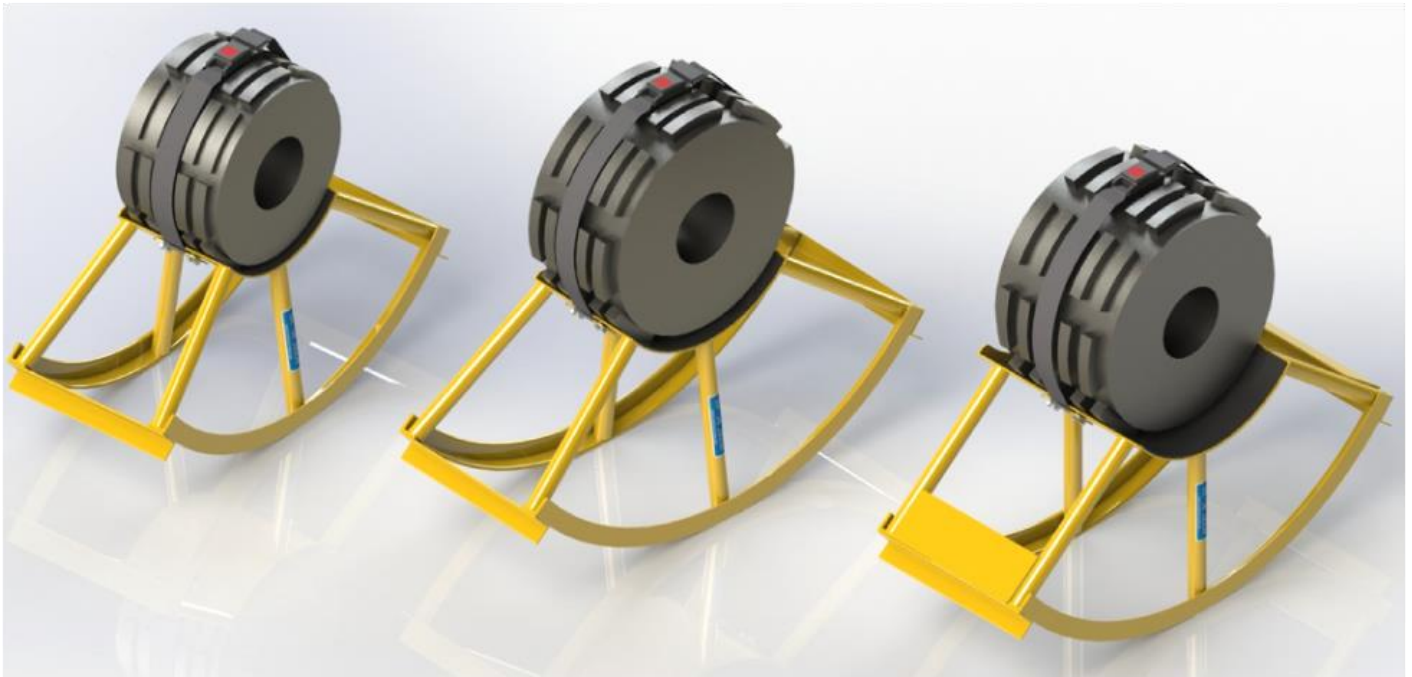


Aircraft Brake Cradles

Models BC300P, BC400P and BC500P



BC300P

Saddle Dimensions:
7.50" Radius x 10" Depth

BC400P

Saddle Dimensions:
9.25" Radius x 10" Depth

BC500P

Saddle Dimensions:
9.25" Radius x 16" Depth

The Malabar Models BC300P, BC400P and BC500P Aircraft Brake Cradles are designed to be used in conjunction with Malabar Models 175M and 175S-2 Wheel/Brake Changers.

Models BC300P, BC400P and BC500P, are built to withstand harsh environmental conditions, rugged use and to provide many years of continuous service.

Our customers are guaranteed a quality product with each purchase and are assured of our continued product support whenever and wherever the need arises.

Standard Features:

- Polyurethane Saddle Pad for improved metal and composite brake protection
- Saddle incorporates a brake stop plate for better brake restraint
- Brake Restraint Strap
- Round bottom rails assist operator with brake alignment
- Rugged Tubular Steel Frame
- Skydrol Resistant Paint (safety yellow)
- 1 Year Warranty

Aircraft Brake Cradles

Models BC300P, BC400P and BC500P

Specifications:

Rated Capacity 600 lbs (272kg)
 Unit Weight 40 lbs (18.0 kg)

| Typical Aircraft Applications: | |
|---------------------------------------|---|
| Brake Cradle Model | Main Gear Wheels |
| BC300P | F70, F100 |
| BC400P | A300, A310, A319, A320, A321, B707, B717, B727, B737, B757, B767, DC8, DC9, MD80-90 |
| BC500P | A330, A340, A350, B747, B777, B787, DC10, MD11, L1011 |

Optional Equipment Codes:

(Specify with order)

SPC: Special paint color (yellow is standard)

Packaging Codes & Options:

(Specify with order)

--: Domestic Skid
 EC: Export Crate (Additional Cost)

| *Shipping Data: | | | | |
|---|---------------------|--------------------|---------------------|--------------------|
| Note: Unless otherwise specified, brake cradle is shipped on a wood skid. | | | | |
| Packaging Code | Length inch (mm) | Width inch (mm) | Height inch (mm) | Weight lbs (kg) |
| — | 40 (1016) | 23 (584) | 19 (483) | 70 (31.8) |
| EC | 42 (1067) | 27 (686) | 22 (559) | 90 (40.8) |

*Brake cradle(s) may be included together with Model 175M or 175S-2 Wheel/Brake Changer packaging.